

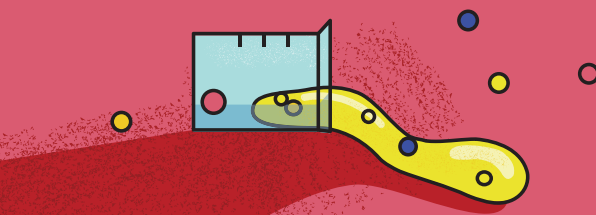
FROM THE SCIENTIFIC POINT OF VIEW

In scientific terms, Super Slime is a **polymer**, and in everyday language Slime is nothing but a plastic, i.e. one type of synthetic materials.

As a result of combining the right amount solution of borax and glue (containing polyvinyl alcohol), the cross-linking process takes place. This process consists in creating cross-links between polymer molecules. As a result, the viscosity of the liquid increases rapidly, giving it unique properties..

Two Separate substances, which were classic liquids before the experiment, after being combined, became a new substance with completely different properties than at the beginning.

In science, we call it **non-Newtonian fluid**.



The name non-Newtonian fluid was coined from the surname of an English scientist **Isaac Newton**. In one of his theses, Newton stated that all liquids have a certain viscosity, which is not affected by pressure from other bodies.

Our slime is not subject to this thesis. The harder we press on it, the more its molecules bind together and stick together. The less we squeeze it, the weaker the bonds and viscosity become and our slime melts.

SUPER SLIME

Super Slime is a set composed for enthusiasts of slimes and substances with super stretching properties. As a result of the appropriate combination of the components contained in the set, a polymer is formed, i.e. the so-called slime. The base ingredient in this set is white glue and the activating substance is sodium borate.

The created slime offers a variety of possibilities for super creative-sensory play! You can cut out shapes, stretch it like endless spaghetti, blow enormous glittery balloons and make funny noises.

DID YOU MANAGE TO DO THIS EXPERIMENT?

We would be very pleased if you would be willing to share the result of your experience with us. Post a photo or video on Facebook or Instagram. Mark us: **@KrainaEksperymentow** :)

f/ @ KrainaEksperymentow

THE SET INCLUDES:

- 1 borax capsule
- 2 glue 50 ml
- 3 dye in a bottle
- 4 glitter in capsule
- 5 balls in a vial
- 6 2 measuring containers
- 7 glass beaker
- 8 teaspoon
- 9 spoon
- 10 syringe
- 11 2 caps for containers
- 12 protective tray
- 13 straw
- 14 instruction



SUPER SLIME

INSTRUCTION TO PERFORM THE EXPERIMENT

www.krainaeksperymentow-zgora.pl



1 BORAX SOLUTION



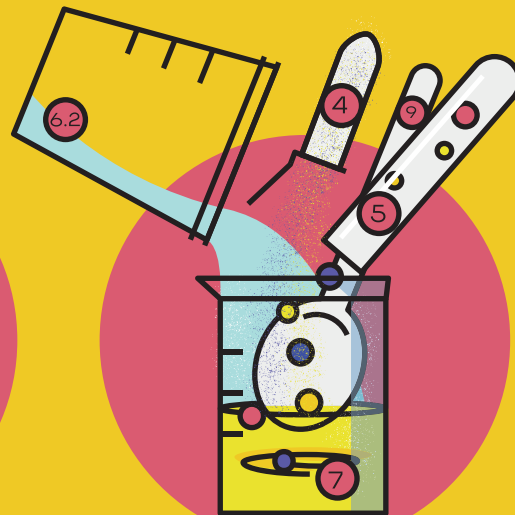
In the container (6.1), measure 50 ml of hot water. Pour all the borax (1) and mix with a teaspoon (8).

2 GLUE SOLUTION



Pour the glue from the bottle (2) into the beaker (7) and add dye (3) as desired. Stir with a spoon (9).

3 SUPER SLIME



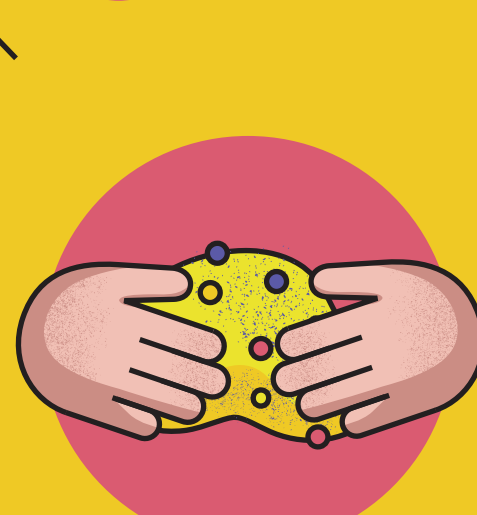
In a container (6.2) measure 50 ml of warm water and pour it out to the beaker with glue (7). Mix it with a spoon (9). Add the capsule glitter (4) and the coloured balls (5) and mix.

4 COOL! DONE!



Take 7 ml of the borax solution from the container (6.1) into the syringe (10) and add to the beaker with glue (7). Stir thoroughly with a spoon (9) – The Slime should detach from the sides of the beaker.

4 COOL! DONE!



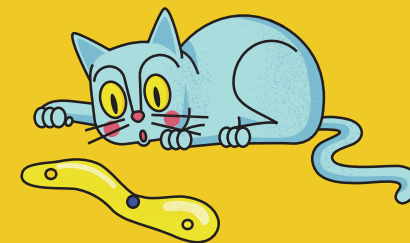
Take the Slime out of the beaker and knead it, until it stops sticking to your hands. Slime is ready to play! You can use our hints or invent your own play with the use of slime.

ADVICE:

If Slime is still sticky add a little more borax solution and knead.

Remember, that by increasing the amount of borax, we make the slime thicken. So when we add too much borax, our plastic mass may lose its stretching properties.

Don't get discouraged by failures. Experiment and have fun discovering the world. You may discover something completely new just by mistake. :)



HAVE FUN WITH THE SUPER SLIME IN A MILLION OF WAYS!

- Play with slime on smooth surfaces items such as table, plastic trays etc.
- The slime offers the possibility of a variety of sensory plays. It is perfectly elastic and stretchy, so you can squeeze it, crush it, roll it, stretch it into endless snakes and pasta.
- You may prepare a rolling pin with moulds and cut out various shapes from it, just like when playing with classic dough. Make a ball out of it and you will notice that if you leave it without touching it, the slime ball will melt over the surface after some time.
- Get started: squeeze the slime into the box attached to the set. The air collected at the bottom of the container will start to come out making extremely funny sounds.
- After the play, put the Slime in the container (6). Screw the cap tightly not to let the Slime dry up and lose its properties.
- The remaining borax solution can be stored in a tightly closed container and re-used.

VERSATILE BORAX

The activating substance needed to create the super slime is **sodium borate** commonly known as **borax** in this kit.

Borax is a chemical compound with a wide range of uses, including as a cleaning and decontamination agent and as a preparation for soldering and glass production.

PLEASE NOTE! YOU ARE DOING EXPERIMENTS!

Although the kits do not contain poisonous substances you must always be careful. While experimenting **do not eat or taste any products or ingredients**.

If you accidentally swallow any of the ingredients, rinse your mouth with water. In the event of any disturbing symptoms, take a leaflet and go to a doctor with it. The kit is **not suitable for children under 3 years of age**. After the conducted experiment **always wash your hands**.